



**Links2Care**  
 Children's Program  
**Participant Guide**  
 September 2009 to August 2010



**Ontario Early Years Centre, North Halton**  
[www.links2care.ca](http://www.links2care.ca) [www.ontarioearlyyears.ca](http://www.ontarioearlyyears.ca)

**Acton Satellite**  
 Acton Parent-Child Resource Centre  
 85 Wallace Street  
 Acton, ON L7J 2G1  
 519-853-2574

**Georgetown Satellite**  
 Georgetown Parent-Child Centre  
 96 Guelph Street  
 Georgetown, ON L7G 3Z5  
 905-873-2960

**Links2Care**

Links2Care is a leader, providing high quality support services to the community we serve. We are recognized as a dynamic, innovative organization and a respected partner meeting the needs of the community with professional and caring staff and volunteers.  
 \*Children's Program \*Youth Program \*Seniors Program \*Support Services \*Community Information \*Volunteer Opportunities  
 Call 905-873-6502 or 519-853-3310 for more information.

**Links2Care – Children Program Staff**

Sandra Melhuish – Links2Care Executive Director  
 Lisa Hoekstra – Director of Children and Youth Services  
 Jennifer MacArthur – Program Assistant, Children & Youth Services  
 Sam Lico – Teacher, ECE  
 Pat Wright – Teacher, ECE  
 Brigid Poyner- Teacher, Family Support Coordinator  
 Kathy Gorski – Teacher's Assistant  
 Donna Hopkins – Teacher's Assistant  
 LeAnne Timukas – Teacher's Assistant  
 Gloria Walker – Teacher's Assistant



**Volunteers in Action:** To volunteer in Early Years Programs please call Lee-Ann Babin at 905-876-1244 ext. 16.  
 To assist in Family Resource Programs or other Links2Care programs please call Patty Colautti at 905-873-6502.

**Satellite Descriptions**

- The Ontario Early Years Centre (OEYC) **Acton Satellite** is located in a large hall, sectioned into learning centres, an eating area, Resource and Toy Lending Library.
- The OEYC **Georgetown Satellite** is situated in a school, with three main activity rooms, kitchen, Resource Library, Toy Lending Library, meeting room and office.
- Both sites have a kitchen with access to a microwave oven. The Acton Satellite is fully accessible and the Georgetown Satellite is wheelchair-friendly.

**Learning Centres**

- Depending on the Satellite, children along with their parents and caregivers are provided play-based learning experiences in some of the following areas: dramatic play, art, blocks, active play such as ride-on equipment, sand and water play, science, puzzles, early math, early reading and early writing activities, story and circle time.

**Toy Lending Library**

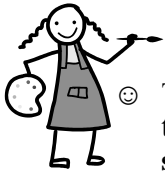
For a low annual membership fee toys, equipment and videos can be borrowed for a two-week loan period.  
 Check it out!

**Resource Library**

Books, videos, tapes, articles, parent/child kits and other supportive resources are available at the Acton and Georgetown Centres during program times.  
 Feel free to browse or ask a staff member for help.

**Registration Information**

- Programs are age specific and some require registration.
- Placement in most registered programs is based on a lottery system.
- Registration for one-time programs or special events is received on a first come, first served basis.
- All registrations must be received by the deadline date.
- Registration in certain programs may be limited to one-time participation.
- Registration Dates:
  - **Fall Programs:** August 17 to 21 and September 8 to 11 – Programs start week of Sept. 28, 2009
  - **Winter Programs:** November 23 to November 27 – Programs start week of January 4, 2010
  - **Spring & Summer Programs:** March 2 to March 5 – Spring programs start week of April 6, 2010  
 - Summer programs start week of June 28, 2010



## Centre Orientation and Guidelines

- ☺ The Drop In program is designed for adult and child interactions. Certain activities will encourage your child to interact with other children. Please **supervise your child at all times**. There will be moments for you to **stand back and observe** but you are at the Centre to **interact with your child** and **intervene** when necessary. **BE AWARE, BE THERE!**
- ☺ The Centre provides **learning centres for children from 0-6 years**. Some toys, equipment and activities are designed for children of a certain age range. Please **redirect your child to other age appropriate toys, equipment and activities**, if necessary. Some materials are to be used only with direct adult supervision.
- ☺ As a participant at the Centre, you are expected to **tidy up the toys and materials** that you have used. For example, hang up the clothes in the Drama Centre, return art materials to the Art Cart, disinfect your table after eating and sweep the floor. **Encourage your children to clean up** after themselves by being a role model.
- ☺ Children learn through play. Staff set up the environment with **learning centres for children from 0-6 years old**. Some learning centres are designed for children of a certain age range (ex. infant versus preschool child). Certain toys, equipment or materials are to be used only with **direct adult supervision and assistance**.
- ☺ **You can help by:**
  - Respecting the Centre's guidelines.
  - Providing items that are listed on our "Donations" list.
- ☺ **Staff** members wear name badges. They will gladly:
  - Assist you during your visits at the Centre.
  - Help you understand the importance of play and what your child learns through play.
  - Suggest toys and activities that are age appropriate for your child's developmental stage.
  - Find information for you on parenting, child development or other family issues.
  - Refer you to other services in the community.
  - Answer your questions and address your concerns.



### Others Programs and Services at the Ontario Early Years Satellites

- **Healthiest Babies Possible Prenatal Program:** Pregnancy information and classes at the Georgetown Satellite. Call the Health Department at 1-866-442-5866 to register.
- **Canadian Prenatal Nutrition Program:** Learn about eating healthy for you and your baby and much more at this program at the Georgetown Satellites. Drop in every 3rd Friday from 12:30 to 2:30 pm or call the Health Department at 1-866-442-5866 to register or for more information.
- **Calling New Parents Program:** Weekly group for new parents with babies from birth to six months. No registration required. Group led by Public Health Nurse on Tuesdays from 1-3pm in Acton and Georgetown.
- **Infant Hearing Screening:** To schedule your infant hearing screening call Erin Oak at 1-877-374-6625.
- **La Leche League Acton/Georgetown:** Monthly meetings held on the second Wednesday of the month at the Georgetown Satellite. For more information and breastfeeding support call Sam at 905-702-0768.
- **DEIPP Clinics:** The clinic offers parents a 15-minute consultation with professionals in the areas of Speech, Hearing, Behaviour, Infant and Preschool Development. See their Program Schedule for dates or call the Acton or Georgetown Satellite for more information.

### Programs and Services in the Community that You Might Need

- **Healthy Babies Healthy Children:** Halton Region's Health Department offering information and services to families with babies and children. Call 1-866-442-5866.
- **Children's Resource Services:** For infants and children with special needs. Free information and assistance for children with developmental delays. Call 1-866-442-5866.
- **Reach Out Centre for Kids:** Children's mental health centre providing assessment and treatment of children and families in difficulty. Call 905-634-2347 or for the Milton Walk-In Clinic call 905-875-2575.
- **Halton Women's Place:** For women and children leaving abusive relationships. Call 905-878-8555.
- **Halton Family Services:** Programs and services for individuals, couples and families dealing with life's challenges. Call 905-845-3811 for information.
- **Halton Child Care Registry:** Free service providing information to families searching for child care in Halton Region. Call 905-875-0235.

Please note: **Centres are open on Professional Development and Early Dismissal Days however the Early Years Programs are limited to children from birth to 6 years old, not yet in Grade 1.**

## Dates to Remember!



## Centre Closures for September 2009 - August 2010

**August 25 - September 5 – All Sites closed**  
**Wednesday, September 24 – Acton Satellite for DEIPP Clinic**  
**Monday, October 13 – Closed for Thanksgiving**  
**Thursday, November 13 – Georgetown Satellite for DEIPP Clinic**  
**December 22 to January 2 – Closed for Holiday Season**  
**Wednesday, January 28 – Acton Satellite for DEIPP Clinic**  
**Monday, February 16 – Closed for Family Day**  
**Thursday, March 5 – Georgetown Satellite for DEIPP Clinic**  
**March 16 to 20 – Closed for March Break**  
**Friday, April 10 – Closed for Good Friday**  
**Monday, April 13 – Closed for Easter Monday**  
**Thursday, May 7 – Georgetown Satellite for DEIPP Clinic**  
**Monday, May 18 – Closed for Victoria Day**  
**Wednesday, June 3 – Acton Satellite for DEIPP Clinic**  
**June 22 to June 26 – All Sites Closed**  
**Wednesday, July – Closed for Canada Day**  
**Monday, August 3 – Closed for Civic Holiday**  
**August 24 to September 4 – All Sites Closed**

Updated: June 2009